



  
SHORTLAND  
HORNE

Trusted  
Property Experts

  
SHORTLAND  
HORNE

Broomfield Road  
CV5 6LA

# Broomfield Road

## CV5 6LA

### AUCTION

Being Sold via Secure Sale online bidding. Terms & Conditions apply. Starting Bid £145,000

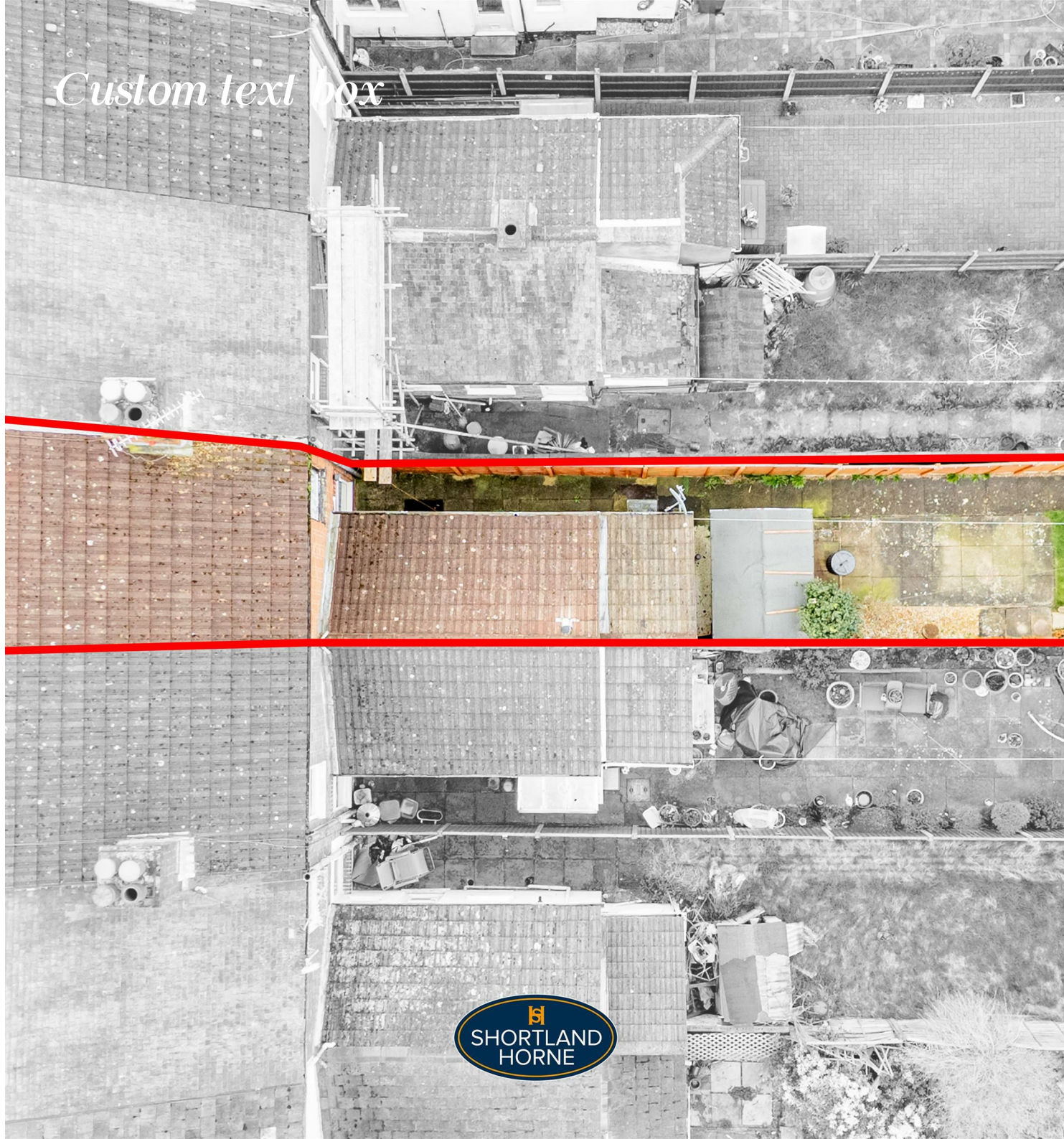
Nestled on Broomfield Road in the vibrant city of Coventry, this charming mid-terrace house presents an excellent opportunity for those seeking a comfortable and inviting home. With two well-proportioned bedrooms, this property is ideal for small families, couples, or individuals looking for extra space.

Upon entering, you will find two delightful reception rooms that offer versatility for both relaxation and entertaining. These spaces are perfect for hosting friends or enjoying quiet evenings at home. The layout is practical and welcoming, ensuring that you can easily make this house your own.

The property boasts a well-appointed bathroom, providing all the necessary amenities for your daily routines. The house is ready to be moved into, allowing you to settle in without the hassle of extensive renovations or repairs.

*Custom text box*

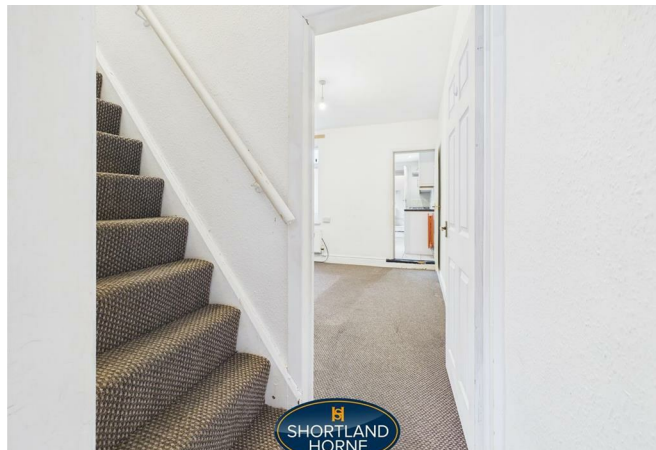
selling quality  
property since 1995





*Custom text box*





## Dimensions

### GROUND FLOOR

#### Porch

1.14m x 0.84m

#### Lounge

3.38m x 3.40m

#### Dining Room

3.40m x 3.71m

#### Kitchen

1.93m x 3.48m

#### Inner Hall

1.35m x 1.14m

#### Bathroom

1.91m x 1.47m

### FIRST FLOOR

#### Bedroom

3.38m x 3.71m

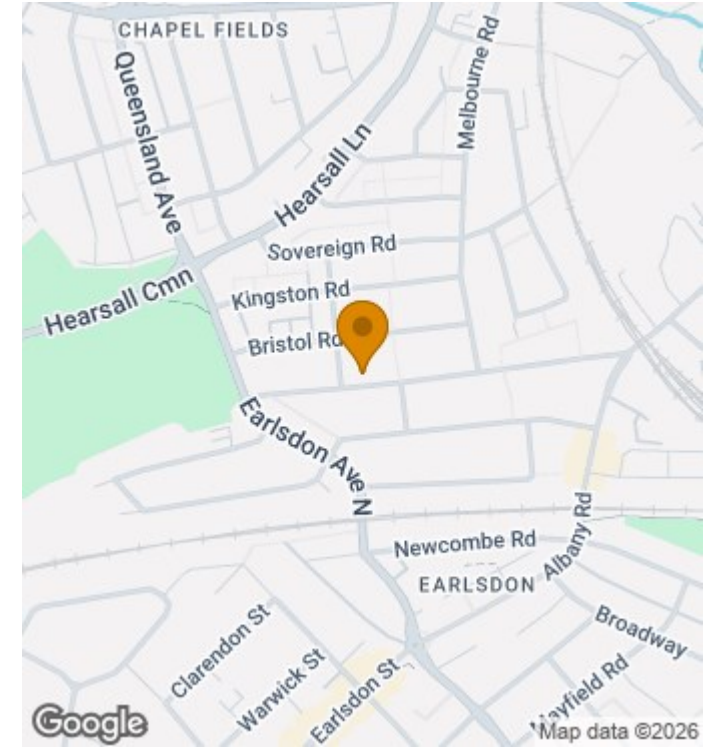
#### Bedroom

3.38m x 3.40m

# Floor Plan



# Location Map



Total area: sq ft

### Disclaimer

**Services** All main services are understood to be available. Prospective purchasers are however recommended to verify connection with the appropriate suppliers.

**Fixtures and Fittings** Excluded unless referred to in the sale particulars. Photographs are for illustrative layout purposes only and items shown are not included unless specifically mentioned in contract documentation. Please note: wide angle lens photography may be used, in certain instances, sometimes resulting in slight distortion.

**Viewing** Strictly by arrangement through Shortland Horne.

**Measurements** Room measurements and floor plans are for guidance purposes only and are approximate.

**Purchase Procedure** It is essential to contact our offices before applying for a mortgage or arranging for a survey on this or any other Shortland Horne property to confirm current availability.

**Money Laundering** We have in place procedures and controls, which are designed to forestall and prevent Money Laundering. If we suspect that a supplier, customer/client, or

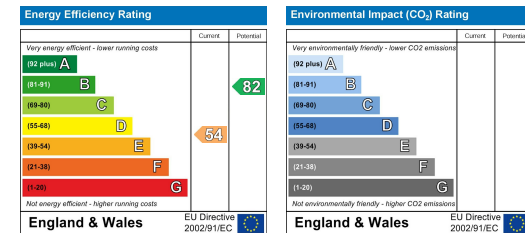
employee is committing a Money Laundering offence as defined by the Proceeds of Crime Act 2002, we will in accordance with our legal responsibilities disclose the suspicion to the National Criminal Intelligence Service. Intending purchasers will be asked to produce identification documentation at a later stage and we would ask for your co-operation in order that there will be no delay in agreeing the sale.

**Appliances** We would ask that you note that the property may contain appliances that would warrant checking for satisfactory working condition and you may wish to arrange this at your own expense prior to legal commitment.

**Referrals** If Shortland Horne have introduced you to a Solicitor, Mortgage Advisor or Surveyor with whom we have a business relationship we are required by the Code of Conduct published by the NAEA propertymark to notify you that we will receive a referral fee. The fee for these services will vary depending on the transaction and intermediary may make to attract business.

Shortland Horne's Mortgage Advisor is Midland Financial Planning Limited, a partner practices of St. James's Place. For referring business to Midland Financial Planning Limited Shortland Horne will receive up to 50% of any commissions earned. You do not have to use the service of any of our providers and can choose to source the service from someone else. Any advice that is provided will be independent.

# EPC



Trusted  
Property Experts

02476 222 123

lettings@shortland-horne.co.uk @ShortlandHorne

shortland-horne.co.uk Shortland-Horne